

# Mouse CD48/SLAMF2 Protein

Cat. No. SLA-MM248

## Description

|                         |  |
|-------------------------|--|
| <b>Source</b>           | Recombinant Mouse CD48/SLAMF2 Protein is expressed from HEK293 with hFc tag at the C-Terminus.<br>It contains Phe23-Arg216.      |
| <b>Accession</b>        | Q18PH8   |
| <b>Molecular Weight</b> | The protein has a predicted MW of 49 kDa. Due to glycosylation, the protein migrates to 50-55 kDa based on Bis-Tris PAGE result. |
| <b>Endotoxin</b>        | Less than 1EU per $\mu\text{g}$ by the LAL method.   |
| <b>Purity</b>           | > 95% as determined by Bis-Tris PAGE<br>> 95% as determined by HPLC  |

## Formulation and Storage

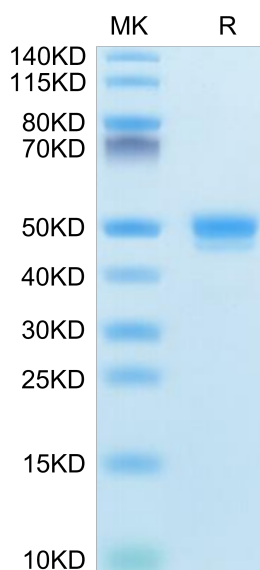
|                       |  |
|-----------------------|--|
| <b>Formulation</b>    | Lyophilized from 0.22 $\mu\text{m}$ filtered solution in PBS (pH 7.4). Normally 8% trehalose is added as protectant before lyophilization.   |
| <b>Reconstitution</b> | Centrifuge the tube before opening. Reconstituting to a concentration more than 100 $\mu\text{g}/\text{ml}$ is recommended (usually we use 1mg/ml solution for lyophilization). Dissolve the lyophilized protein in distilled water. |
| <b>Storage</b>        | -20 to -80°C for 12 months as supplied from date of receipt. -80°C for 3 months after reconstitution. Recommend to aliquot the protein into smaller quantities for optimal storage. Please minimize freeze-thaw cycles.              |

## Background

CD48, also known as BLAST-1, BCM-1, and SLAMF2, is a 65 kDa GPI-linked protein in the CD2 family of immunoglobulin superfamily molecules. CD2 and 2B4 (CD244) are known ligands for CD48. CD48 protein is expressed on most lineage-committed hematopoietic cells but not on hematopoietic stem cells or multipotent hematopoietic progenitors.

## Assay Data

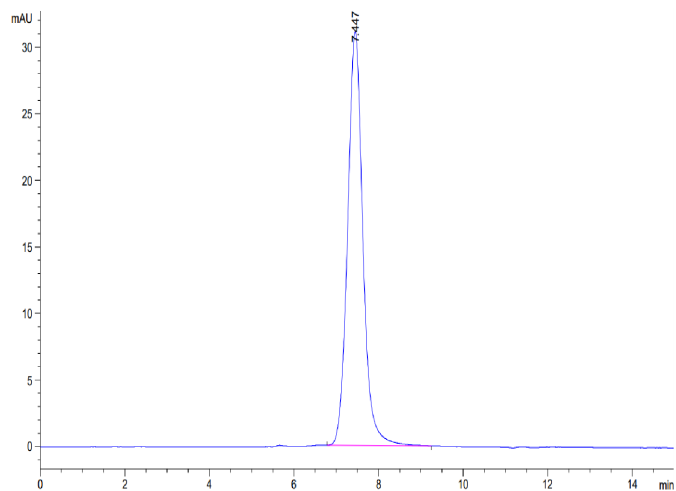
### Bis-Tris PAGE



Mouse CD48/SLAMF2 on Bis-Tris PAGE under reduced condition. The purity is greater than 95%.

### SEC-HPLC

Assay Data



The purity of Mouse CD48/SLAMF2 is greater than 95% as determined by SEC-HPLC.